

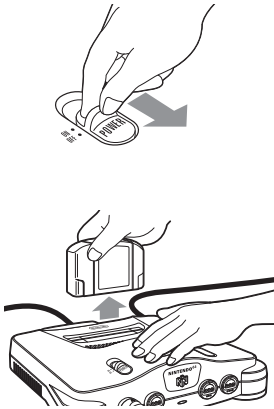
Removing a Game Pak

1. Slide the Power Switch to the OFF position.

CAUTION

Always slide the Power Switch to the OFF position before loading or removing a Game Pak, N64 Controller Pak, controller or accessory.

2. Place one hand on top of the Control Deck and carefully remove the Game Pak from the Control Deck with the other hand.



Returning to Regular TV

After you have finished playing, slide the Power Switch of the Control Deck to the OFF position. Set the TV/VIDEO or Input Select switch on the television back to "TV". If you were using a VCR, set the Input Select switch back to receive cable or antenna input, then turn the VCR OFF.

There is no need to disconnect the RF Switch, AV Cables, AC Power Supply, etc.

For additional maintenance, care and precautions, refer to the separate *Consumer Information and Precautions Booklet*.

Section Four

Troubleshooting

Before seeking repair service, check the problem against the list below:

Problem

No game display image on TV screen.

Solution(s)

- Make sure the Power Switch on the Control Deck is turned ON.
- If the power light on the Control Deck does not come on, see the next section.
- If using an AV connection to your TV, make sure the Input switch is switched to video (see Input Select note on page 11 for details, or your TV instruction manual.)
- If you are connecting the Control Deck to a VCR, make sure the VCR is ON and the Input switch on the VCR is set to the correct input (see Input Select note on page 11 for details, or your VCR instruction manual.)
- If you are using an RF Switch connection, make sure that the Control Deck and the antenna or cable are connected to the RF Switch properly and that the RF Switch is connected to the TV (see page 7).
- If you are connecting the Control Deck to your TV using an RF Switch, make sure the CH3 - CH4 switch on the RF Modulator is set to Channel 3 and that the TV is set to Channel 3.
- Make sure the Game Pak is loaded into the Control Deck correctly (see pages 11-13).
- Make sure the Jumper Pak (or optional Expansion Pak) is inserted correctly into the Memory Expansion slot on the top of the Control Deck.

Problem

Power light on the Control Deck does not come on, or turns off during game play

Solution(s)

- Make sure the AC Power Supply and power cord plug are plugged in.
- If there is still no power to the Control Deck, disconnect the AC Power Supply plug from the wall outlet for at least 2 minutes to reset the circuit, then insert the plug back into the wall outlet and turn the Control Deck ON.
- If the power still does not come on, or turns off again, remove any Game Pak, controllers or accessories connected to the Control Deck. After removal, follow the above reset procedure. If the power now stays on it may indicate a problem with the accessory or Game Pak.

Continued on next page.